

UNIT 2: MY COUNTRY

Name: _____

MC1.4

BUSH TUCKER/MEDICINE RESEARCH

Your plant/animal: _____

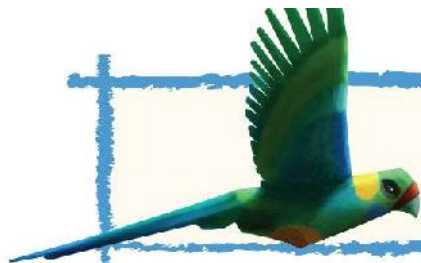
Use the following questions as a guide to help you find out more about your item and record your answers. Collect a photo, picture or, if possible, a live specimen to accompany your findings.

1. What is your plant/animal and where does it come from?

2. What is your plant/animal used for? (e.g. food, medicine, clothing, ceremonies)

3. How is your plant/animal used in traditional Adnyamathanha culture?

4. Who specifically might use your plant/animal?



UNIT 2: MY COUNTRY

Name: _____

5. Why is your plant/animal important to the Adnyamathanha people?

6. Is this item still used today by the Adnyamathanha people as bush tucker or medicine?